



SAFERSEA

Smarter and Eco-friendlier Atlantic area

WP2. CHALLENGE OF MARITIME TRANSPORT

ACT 1. INTERACTIVE MAP

Interreg
Atlantic Area



Co-funded by
the European Union



INDEX

1. Context	3
2. Purpose of the interactive map.....	3
3. Interactive map functionalities and results obtained.....	3

1. Context

The Atlantic Ocean is a strategic area for maritime transport and a gateway to Europe. According to the European Environment Agency (EEA), maritime transport accounts for 77% of Europe's external market share and 35% of the total value of trade between EU Member States. In a joint report, the EEA and the European Maritime Safety Agency (EMSA) say that demand for cargo and shipping will increase in the coming decades after the pandemic lull, which would also worsen the environmental footprint of Atlantic shipping. The industry is now being urged to take corrective action to support a global commitment to reduce harmful emissions and better protect our environment.

SaferSEA is in line with the mission of the Interreg Atlantic Area Programme and one of their priorities dedicated to Blue and Green environment, as the project aims to raise awareness of the challenges facing the maritime industry. The aim of the project is to contribute to the development of a safer and greener maritime sector by providing maritime stakeholders with ready-to-use solutions to support their green transition. In doing so, SaferSEA will promote the identification and development of new technologies for ships and ports and foster a stronger link between stakeholders (shipowners, port authorities, researchers, innovative start-ups...).

Among the activities of the project, specifically in the framework of Workplan 2 Action 1 “Challenges of Maritime Transport”, the realisation of an interactive map has been launched and will be discussed below.

2. Purpose of the interactive map

The main objective of this tool is to facilitate the identification of actors in the Atlantic area who are already carrying out relevant actions to support the environmental and technological transition in the maritime transport sector. It is also important to know the instruments and facilities of these actors, as they may be of interest for the development of pilot projects to support the sustainable development of maritime transport.

This map is a tool open to the project partners and, more broadly, to the general public, with the intention of sharing knowledge between Atlantic Area actors. It will also allow communication on the instruments available to support innovation in the maritime transport sector (partnership projects, funding, etc.).

The partners of the SaferSEA project have developed a tool to locate the entities involved in maritime safety in the Atlantic Area. The information in this interactive map has been collected by the project partners and allows you to see the location of these bodies, the exact location of each actor, their sector of activity and contact addresses.

3. Interactive map functionalities and results obtained

The interactive map is available at <https://maps.safersea.eu/> and on entering we see a map with different locations marked, as shown in Figure 1, showing where the relevant actors are located. We can move freely around the map and click on an entity of interest.

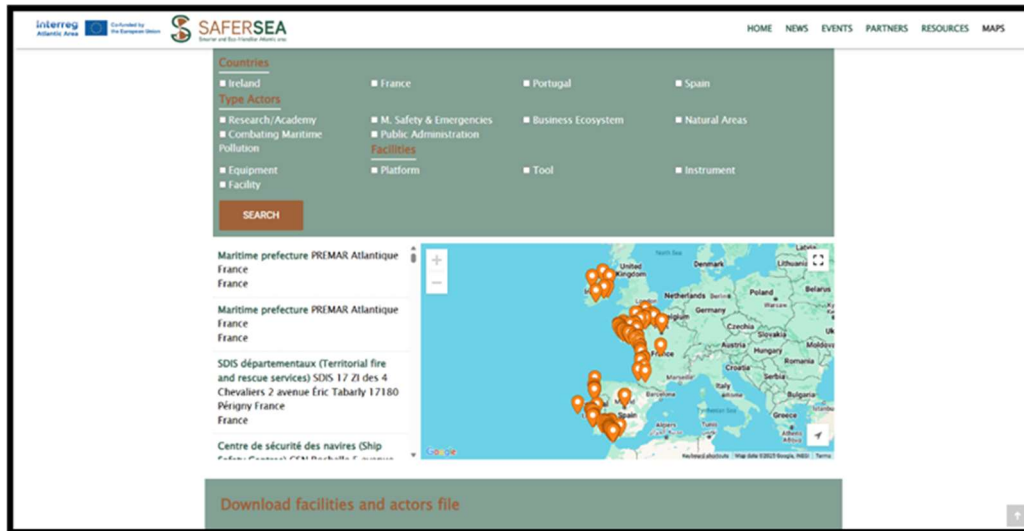


Figure 1: SaferSEA interactive map.

Just above the map there is a green box in which we can filter the entities. In this way, we can tailor our search by filtering by country, sector or type of facility.

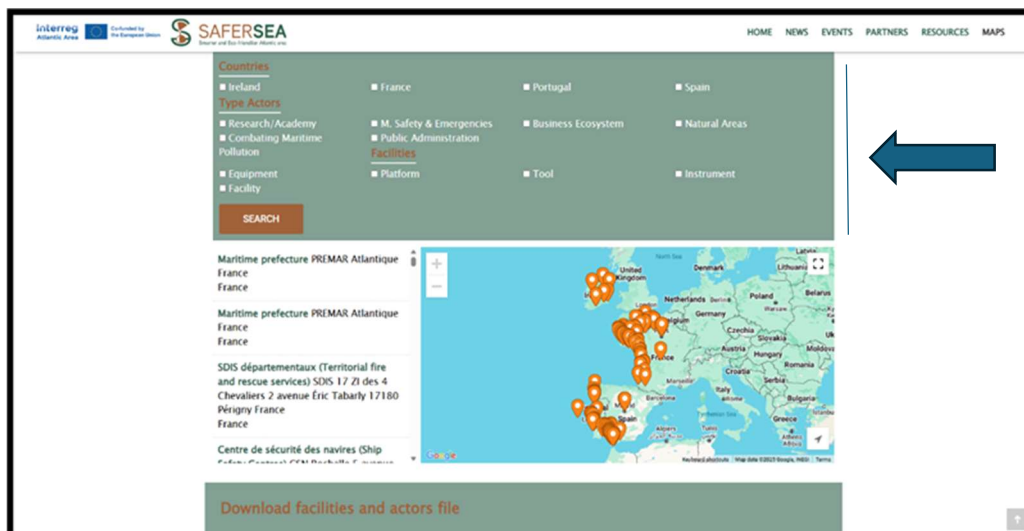


Figure 2: Pointing where the filter is located.

When we click on a specific entity, we are taken to its profile, which describes the type of entity, the activities carried out in the field of maritime transport and the contact details.

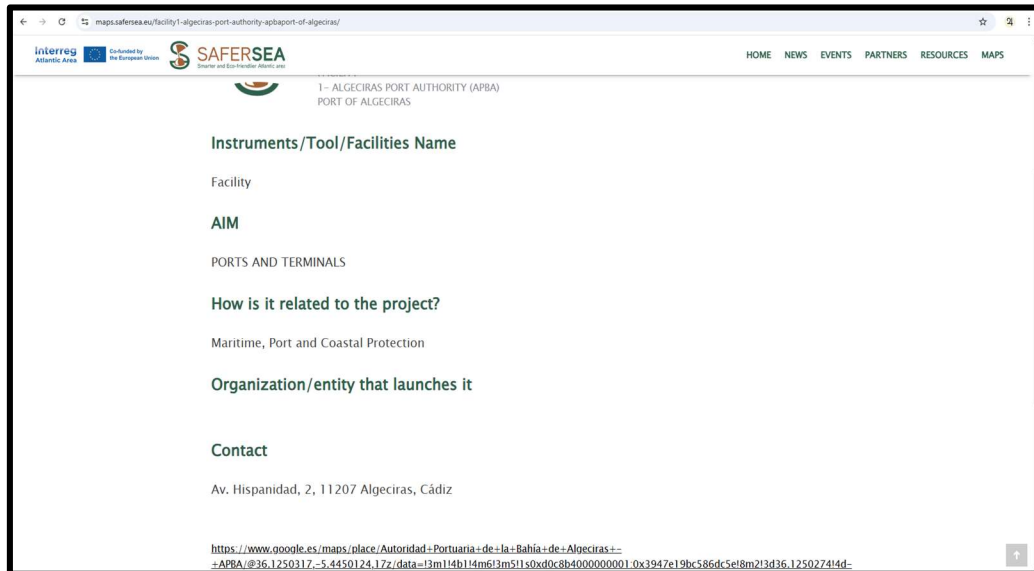


Figure 3: Profile with information on the entities

Finally, in the green box below, we can download a list in Excel of all the entities that appear on the interactive map. This file contains detailed information on each entity, compiled by the project partners, as well as a brief description of the actions carried out in the field of maritime transport.

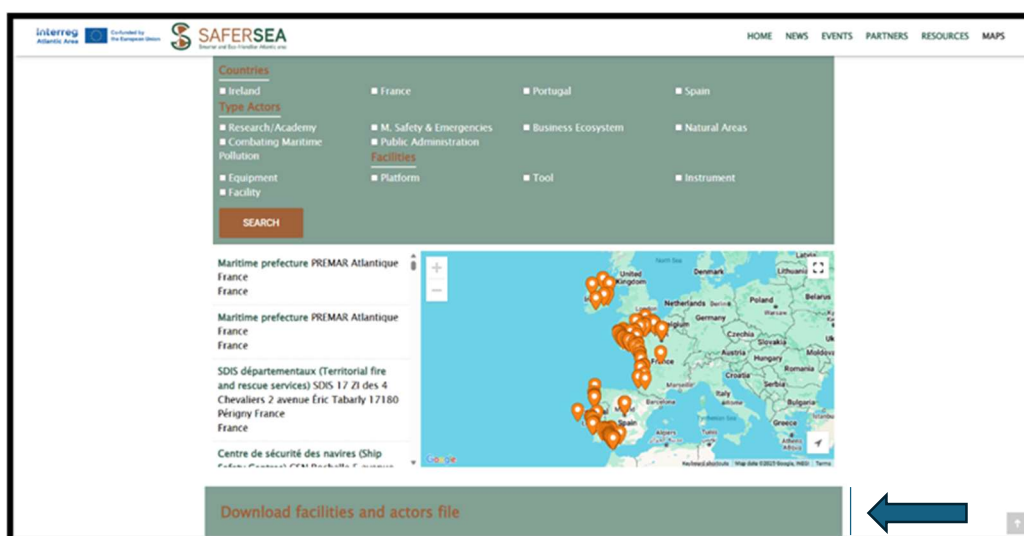


Figure 4: Pointing where the Excel list is located.

All in all, this tool has made it easier to find the actors who can help or are implementing measures for an environmental and technological transition in the maritime transport sector and to promote the transition to a carbon-neutral Atlantic area and the fight against climate change.

In addition, the information gathered by the project partners allowed them to learn more about their functions and facilities and will be useful for a specific action.